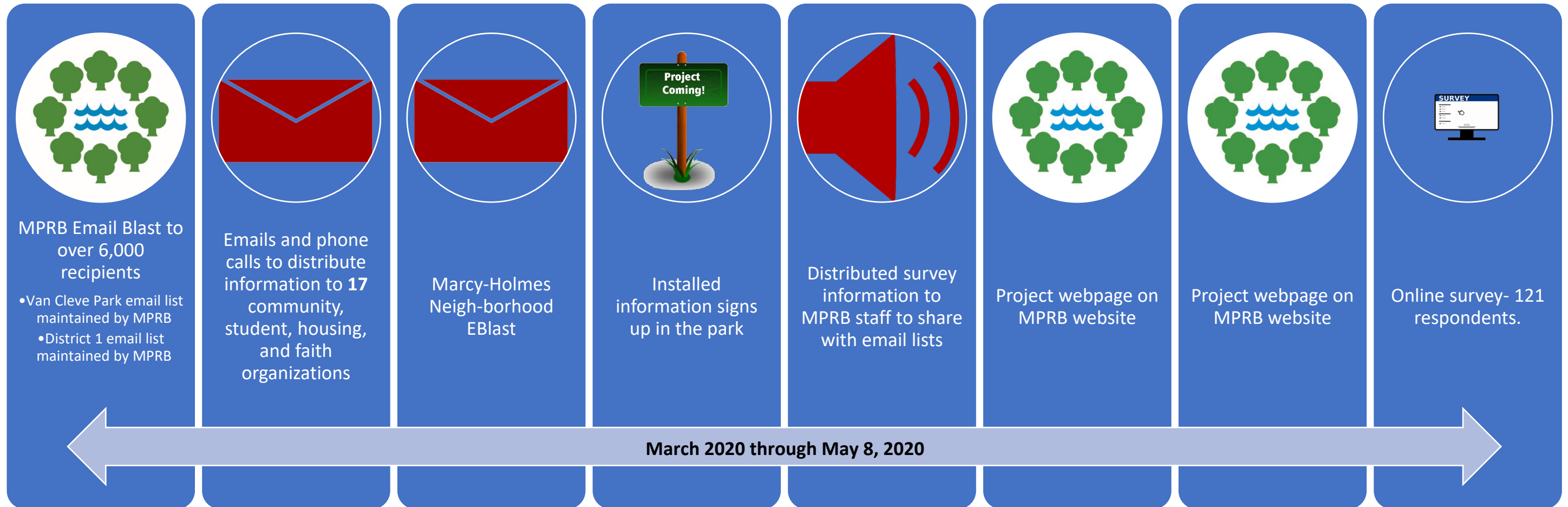
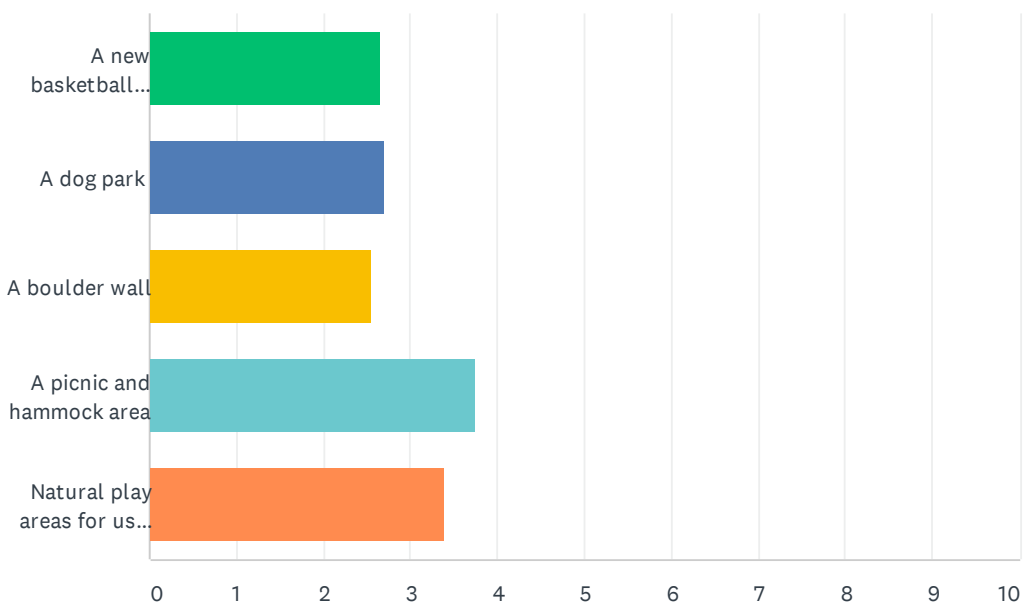


**Marcy Park Improvements Phase 1  
Community Engagement Dashboard  
Prioritization Phase**



Q1 Please share your priorities for site improvements. Please look at the plan image for reference. Please rank your priorities for site improvements. It is anticipated that some new trails will be part of any site work . The pavilion and play ground are also anticipated to removed due to their poor condition.

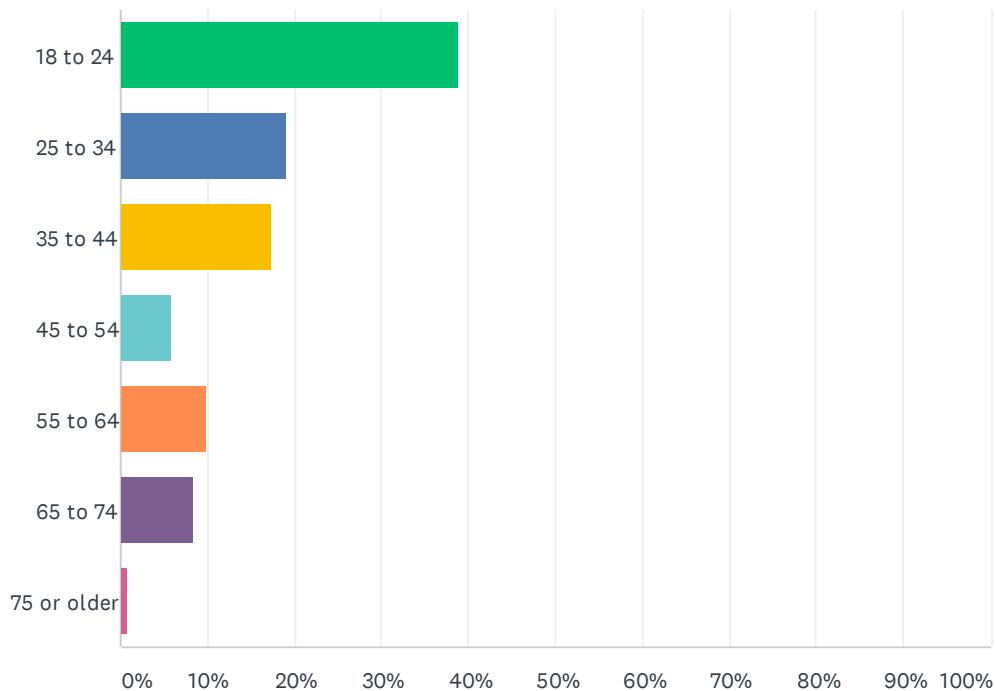
Answered: 121 Skipped: 1



	1	2	3	4	5	TOTAL	SCORE
A new basketball court	21.24% 24	10.62% 12	16.81% 19	15.93% 18	35.40% 40	113	2.66
A dog park	13.79% 16	17.24% 20	18.10% 21	25.86% 30	25.00% 29	116	2.69
A boulder wall	7.69% 9	11.97% 14	32.48% 38	23.93% 28	23.93% 28	117	2.56
A picnic and hammock area	32.50% 39	31.67% 38	18.33% 22	12.50% 15	5.00% 6	120	3.74
Natural play areas for users of many ages	26.67% 32	25.83% 31	15.83% 19	22.50% 27	9.17% 11	120	3.38

## Q5 What is your age? (Optional)

Answered: 121 Skipped: 1



ANSWER CHOICES	RESPONSES	
18 to 24	38.84%	47
25 to 34	19.01%	23
35 to 44	17.36%	21
45 to 54	5.79%	7
55 to 64	9.92%	12
65 to 74	8.26%	10
75 or older	0.83%	1
<b>TOTAL</b>		<b>121</b>

## Comments Summary - Marcy Park Improvements Survey 1 – Priorities

Comments are grouped by topic, comments are summarized not verbatim, and not all comments are reflected where respondents no theme was found.

Number of survey respondents: 121; April 28-May 8, 2020

Prioritization Open-ended Comments (sorted descending from most comments to least)		
Comment Summary – For Comment Themes Only	Notes	MPRB Response
Suggestions about specific improvements for Marcy Park	There wasn't a theme regarding suggestions other than those noted below – they were well dispersed regarding proposed improvements. There were many suggestions, likes, and dislikes share. Many persons are excited about the improvements.	All comments shared will be taken into consideration.
More / improve / preserve green space or natural areas	Like open areas/green space. Several references to providing pollinator friendly plants or lawn.	The ERMP preserves valuable green space along the NE quadrant of the park. MPRB will analyze feasibility and locations to provide bee lawn in phase 1 improvements.
Like the master plan and/or questions about the master plan	Q1: When was engagement for the master plan done? Q2: What are improved walking trails? Q3: What is nature play? Q4: What is a boulder wall and what ages will it accommodate?	A1: Engagement was started in the fall of 2017 and continued through Dec. 2018. A2: Improved walking trails are new accessible trails. A3: Please see the approved master plan for guidance regarding nature play areas. A4: That is yet TBD, and the boulder wall is not anticipated in phase 1.
Keep playground equipment	Swings were the most frequently requested playground equipment.	It is anticipated that a portion of the playground equipment may remain until it can no longer be maintained safely. It is unknown at this time whether swings will remain after phase 1 improvements are made.

More trees or keep trees		MPRB is actively working with MPRB forestry preservation to try and keep as many trees as possible while still making improvements within the park. It is anticipated that a new tree will be planted for every tree removed.
Don't change the park or don't like the master plan	Several persons don't want the master plan to be implemented and prefer the park as-is., or want to minimize changes to the park.	The ERMP indicates improvements to Marcy Park with amenities that attract and accommodate a broader population, reflective of the community demographics. Several years of intensive engagement established the master plan, and it has been approved by the CAC and the MPRB, and is the framework guiding improvements.
No dog park	Too small, not in neighborhood park.	The approved ERMP indicates a small off-leash dog park is constructed at Marcy Park. It is anticipated to be part of phase 1 improvements.
Want dog park (specifically)		A dog park is anticipated to be part of phase 1 improvements.
Want basketball court	Good fit in neighborhood.	A basketball court is anticipated to be part of phase 1 improvements.
No basketball court	Concerns over it being loud.	
Improve / keep walking paths / ADA		New accessible pathways are anticipated to be part of phase 1 improvements.
Add a water fountain / feature / add drinking fountain		A new accessible drinking fountain is anticipated in phase 1. No additional water feature is anticipated.
Improve lighting	Safety related.	It is anticipated that the existing lighting will be re-fed and a new electrical service will be provided to the park to improve / preserve infrastructure for pedestrian lighting in the park in phase 1 improvements. No further improvements to the pedestrian lighting are anticipated in phase 1.

<p>Questions about improvements.</p>	<p>Q1: How will you control noise during construction?  Q2: Will you improve drainage for pathways?  Q3: How about multi-generational swings?</p>	<p>A1: Contractors are required to only work M-F 7am to 6pm unless they seek City approval to limit neighborhood disturbance.  A2: Improved grading and pathways will improve drainage from the paths.  A3: Multi-generational swings may not conform to current playground safety guidelines; therefore, they are not anticipated at this time. They may be considered in a future phase.</p>
--------------------------------------	---	--

<b>Comments and Suggestions about Engagement</b>	
<b>Suggestions</b>	<b>MPRB Response</b>
<p>Suggestion to use U of M to distribute emails</p>	<ul style="list-style-type: none"> <li>• Tried contacting U of M housing office and Radio K to see if they would assist with sending out the initial survey. No response. Two U of M Planning staff provided U of M engagement contacts which were followed up on.</li> <li>• Since then, contact has been made with U of M student housing to help get the word out and engage regarding the project concept plan.</li> </ul>
<p>Reach minorities – too many voices of privilege.</p>	<ul style="list-style-type: none"> <li>• MPRB has worked with the neighborhood and has reached out to diverse community, faith, community, and cultural groups.</li> <li>• Will continue looking for additional ways to reach as many persons as possible and to identify gaps to equitably include as many voices as possible. Groups or persons wishing to be emailed about opportunities to give input are encouraged to subscribe to email updates on the project website at <a href="https://www.minneapolisparcs.org/park_care_improvements/park_projects/current_projects/marcy-park-site-improvements-phase-1/">https://www.minneapolisparcs.org/park_care_improvements/park_projects/current_projects/marcy-park-site-improvements-phase-1/</a> or to contact the MPRB Project Manager noted on the project webpage.</li> </ul>
<p>Reach renters/transitory, not just homeowners</p>	<ul style="list-style-type: none"> <li>• Marcy student housing apartments on the same block assisted in sharing the survey with their residents, signs were also put up in the park.</li> <li>• Tried contacting U of M housing office (several times) and radio K to see if they would assist with sending out the survey. I didn't receive a response. Will continue to reach out and find contacts who are interested in the project.</li> <li>• Will continue looking for additional ways to reach renters/transitory.</li> </ul>
<p>Send out a mailing</p>	<p>A mailing will be done if a concept plan public hearing is undertaken.</p>

Engage with the U of M student association	I will reach out to them when the concept plans are made available
Engage with Minnesota Daily	I will review this with MPRB Marketing/Communications staff. They interact with the press.
Involve larger Marcy-Holmes area; not just immediate park surroundings	MPRB worked with the Marcy-Holmes neighborhood group to share information and opportunities about the project, and reached out to various community, faith, cultural groups. Also, signs were installed in the park to notify park users about the project.
Would like a meeting with locals to discuss plans	If the situation with COVID-19 improves, to allow for this, we will try and meet. If not, we will continue to explore other ways of interacting online via survey or otherwise.