

Kenilworth Channel Naturalization and Shoreline Stabilization

Virtual Information Session

August 20, 2020 4:00-5:30 pm

Held Virtually via Zoom





Welcome!

Meet the Team:

MPRB Team

Daniel Elias, MPRB Project Manager

Emma Pachuta, Senior Planner

Madeline Hudek, GIS Analysis, Tech Support

If you are having trouble with the meeting, call Madeline for assistance at (612) 283-9496

Consultant Team

Jonathon Kusa, Inter-Fluve

Maren Hancock, Inter-Fluve

Eric Nelson, Alliant Engineering



Minneapolis
Park & Recreation Board





Today's Agenda:

- Welcome
- Project Introduction
- Summary of Activities To Date
- Review of Conceptual Plan
- Next Steps and Schedule
- Master Plan Update
- Q&A and Discussion

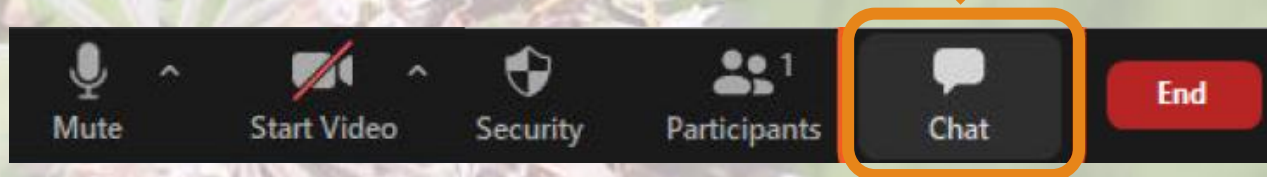
Orientation:

The presentation, notes, and documentation of Questions and Answers from this session will be posted online following the meeting.

This meeting will not be recorded.

At any point during the presentation, please type a question into the Group Chat Window, and following the presentation, we will try to answer all of the questions in the order in which they were submitted.

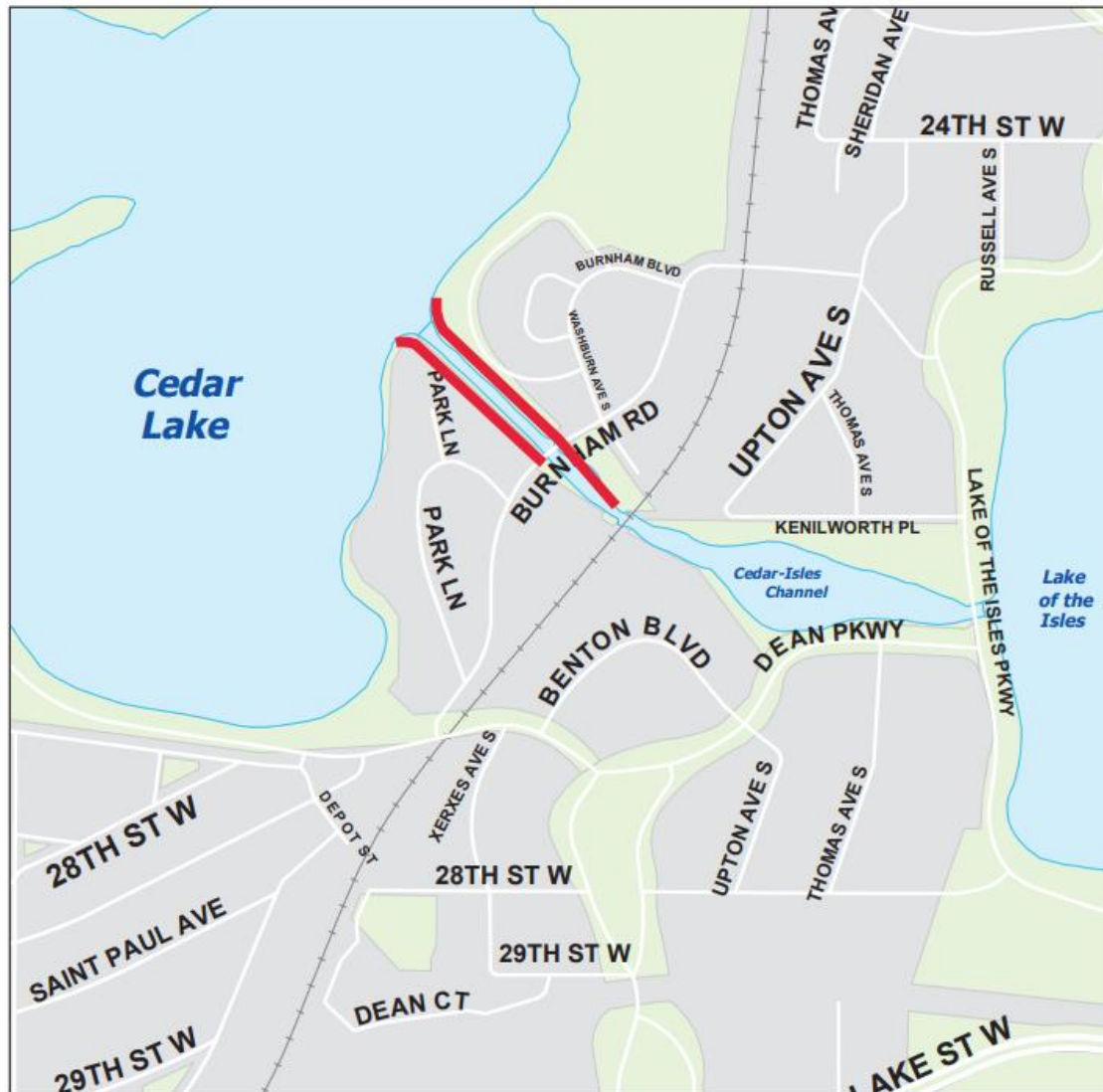
Press the 'Chat' Button and leave your comment in the dialogue box



Project Survey Link:


<https://www.surveymonkey.com/r/KenilworthChannel>

Project Introduction



This project is funded by the Park and Trails Legacy Fund

Project Budget: \$1,030,000

 Project Location

Created January 9, 2020



Existing Channel



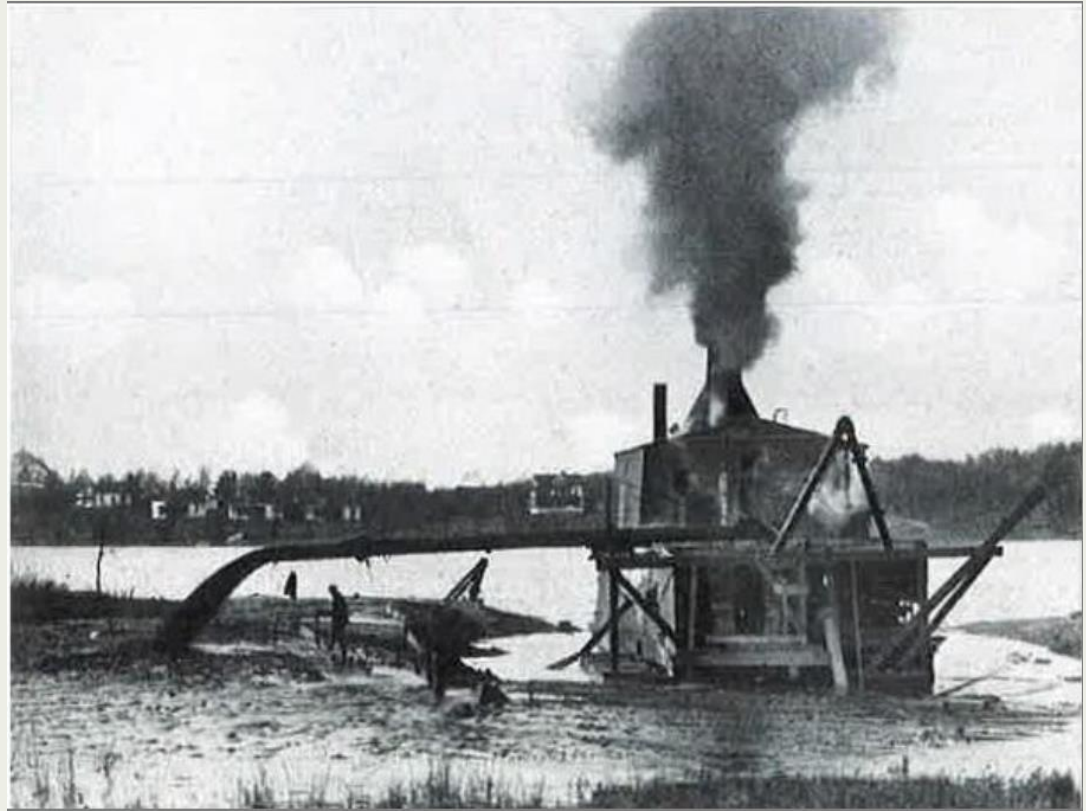


Activities Completed To Date:

- Historical Review
- Thin Ice Issue Assessment
- Survey and Sediment Depth Assessment
- Coordination with City Projects
- Permitting Coordination Initiation
- Design Criteria Development
- Conceptual Plan Development

History of Kenilworth Channel

- Channel dug in 1911-1913
- Cedar Lake lowered by 6 feet to match water level in Lake of the Isles
- Original intent was to have vegetated, naturalized channel banks
- Walls were constructed and reconstructed in 1915, 1936, and 1961



Start of hydraulic dredging of the channel in 1912

(Minneapolis Board of Park Commissioners, Thirteenth Annual Report)

Thin Ice Issue Assessment

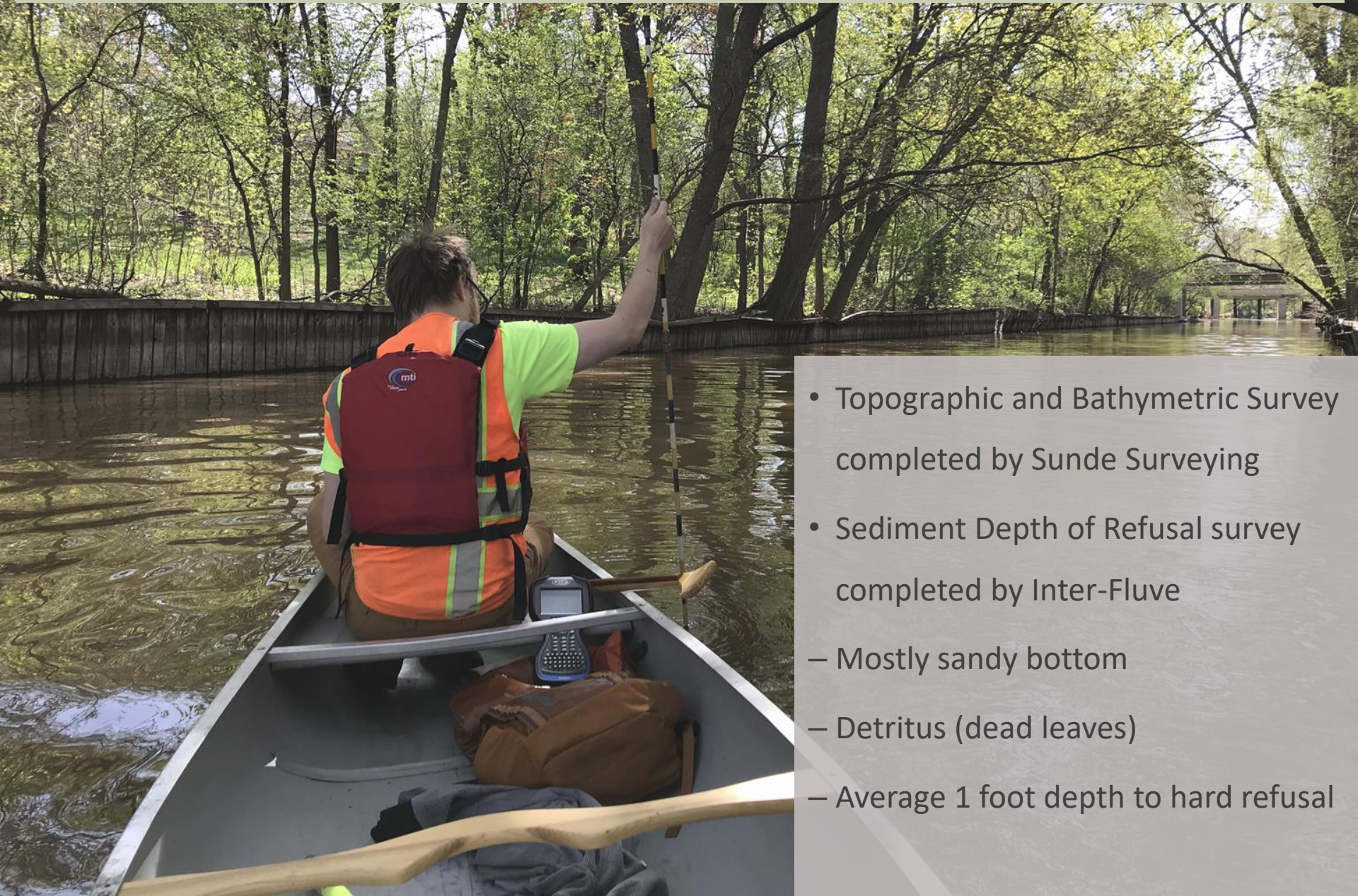


Thin Ice Assessment in February 2020

(Wenck Associates)

- Thin ice spots occurred in the channel the last several winters
- MPRB hired a consultant to study the issue (Wenck Associates)
- Found no primary cause, but factors may include:
 - Shallow sanitary sewer pipe crossing
 - Winter deicing/salt from Burnham Road
- Continued coordination is anticipated to address the thin ice issue

Survey and Sediment Depth Assessment



- Topographic and Bathymetric Survey completed by Sunde Surveying
- Sediment Depth of Refusal survey completed by Inter-Fluve
 - Mostly sandy bottom
 - Detritus (dead leaves)
 - Average 1 foot depth to hard refusal

Coordination with City Projects

The project team is in communication with:

- Southwest LRT Project
- City of Minneapolis Park Lane Sanitary and Storm Sewer Project
- City of Minneapolis Park Lane Pavement Improvements Project

Contacts for City Projects

Will Shutte

(612) 673-3606

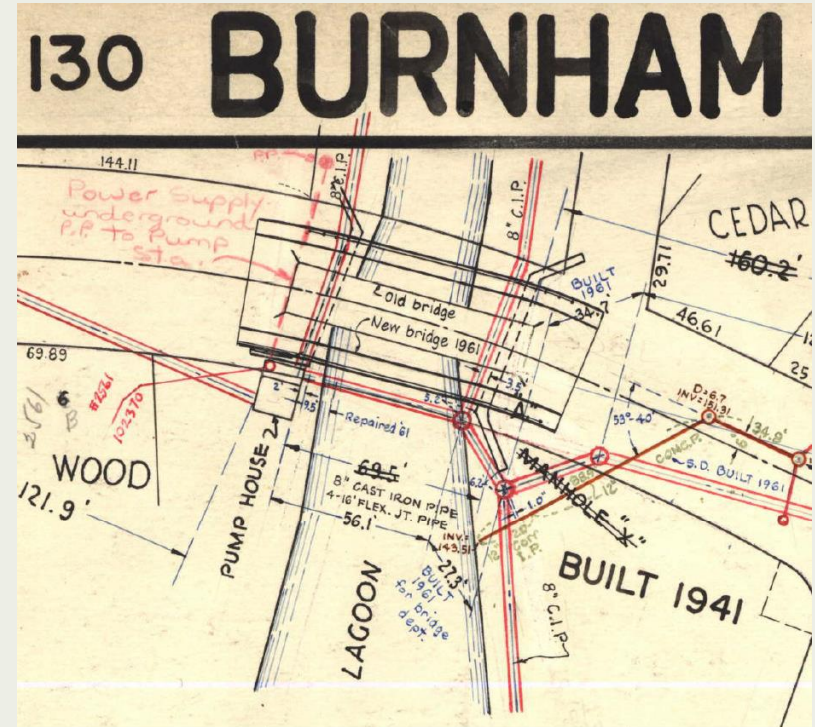
William.shutte@minneapolismn.gov

Paul Miller

(612) 673-3603

Paul.miller@minneapolismn.gov

SWLRT General Information Line:
swlrt@metrotransit.org



1941 Burnham Bridge Reconstruction Plans

(City of Minneapolis)

Permitting Coordination

The project team has initiated permitting conversations and reviewed the conceptual plan with the following permitting agencies:

- Minnehaha Creek Watershed District
- Minnesota DNR
- US Army Corps of Engineers

All permitting agencies have provided informal reviews of the concept plan and are in general support of the project direction.



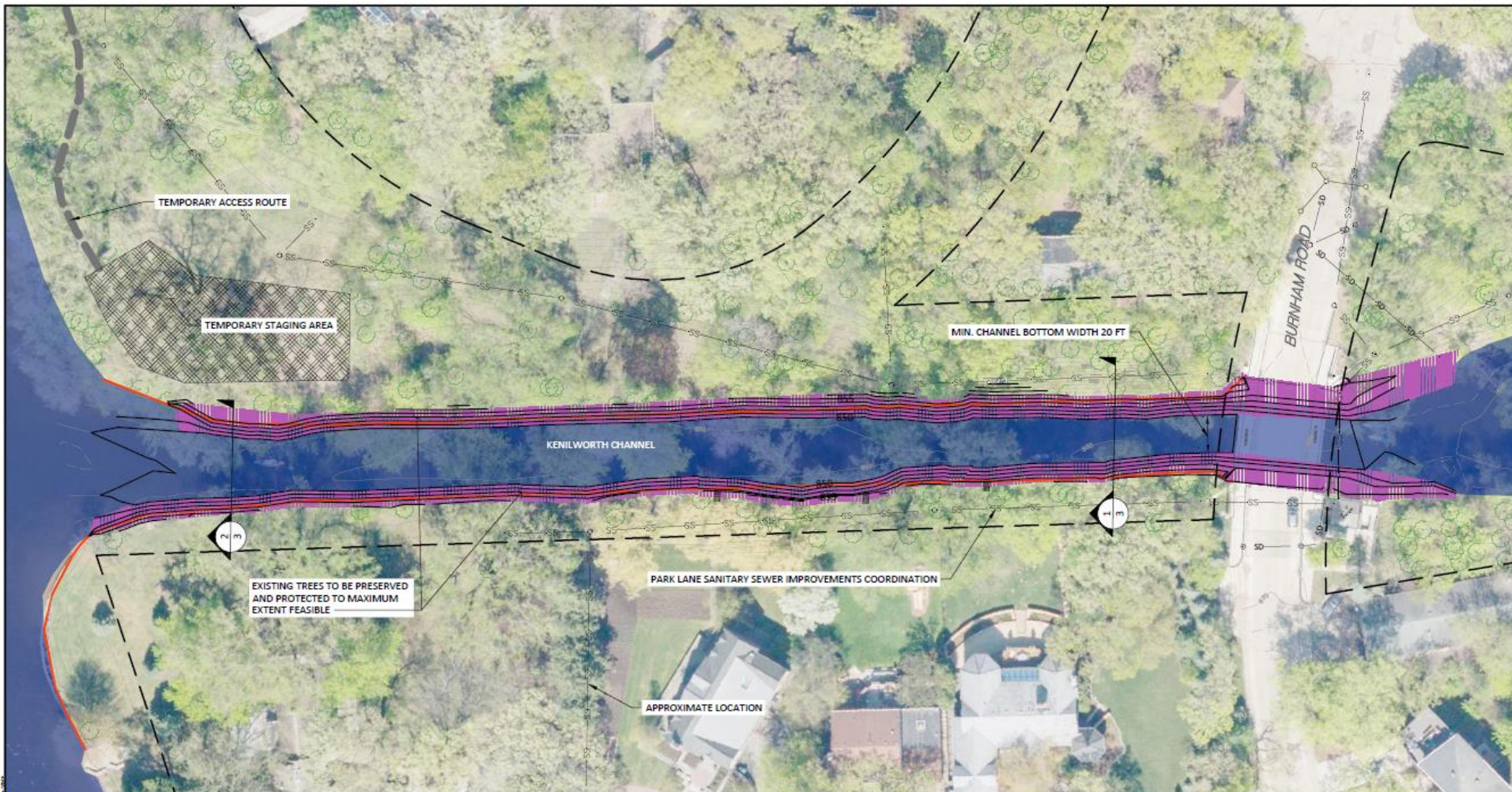
Design Criteria

Established based on review of recreational channel usage and standards, and review with City and Park Board officials.

- Promote ecological uplift
- Allow at minimum two-way, single file usage for non-motorized boats and boats with electric trolling motors (30-foot top width)
- Minimum depth of 2.5 feet
- Minimize long term maintenance
- Minimize tree removals/maintain tree canopy



Conceptual Plan

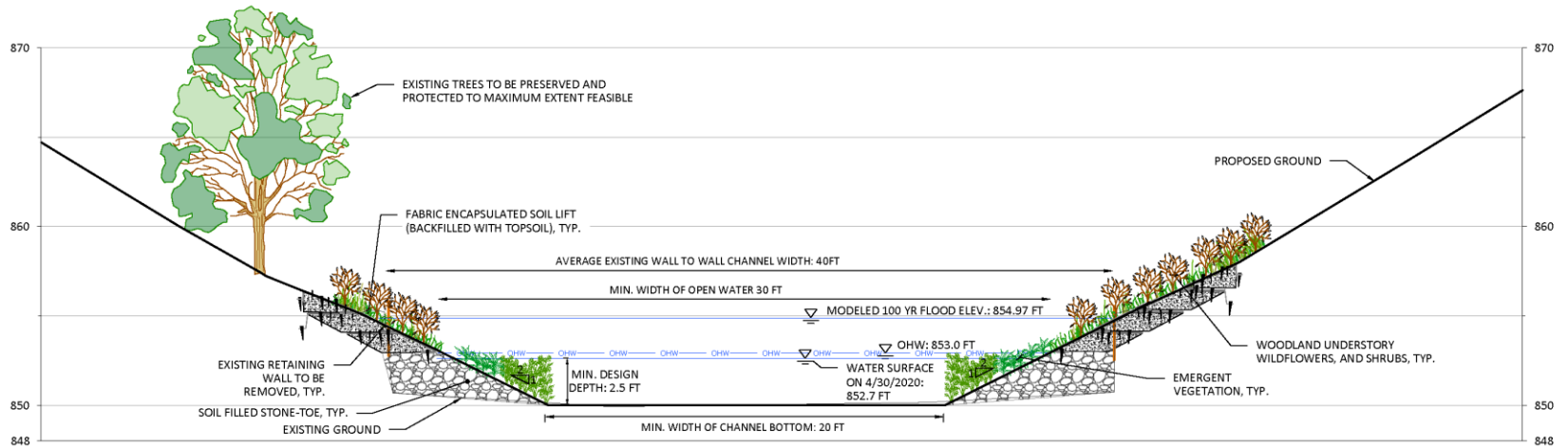


PLAN LEGEND

	NATURALIZATION AND STABILIZATION AREA		MPRB PROPERTY LINE		EXISTING MAJOR CONTOUR (5 FT)
	POTENTIAL LIMESTONE ACCESS STEPS		EXISTING SANITARY SEWER		EXISTING MINOR CONTOUR (1 FT)
	EXISTING WOOD WALL		EXISTING TREE		PROPOSED CONTOUR (1 FT)



Conceptual Plan

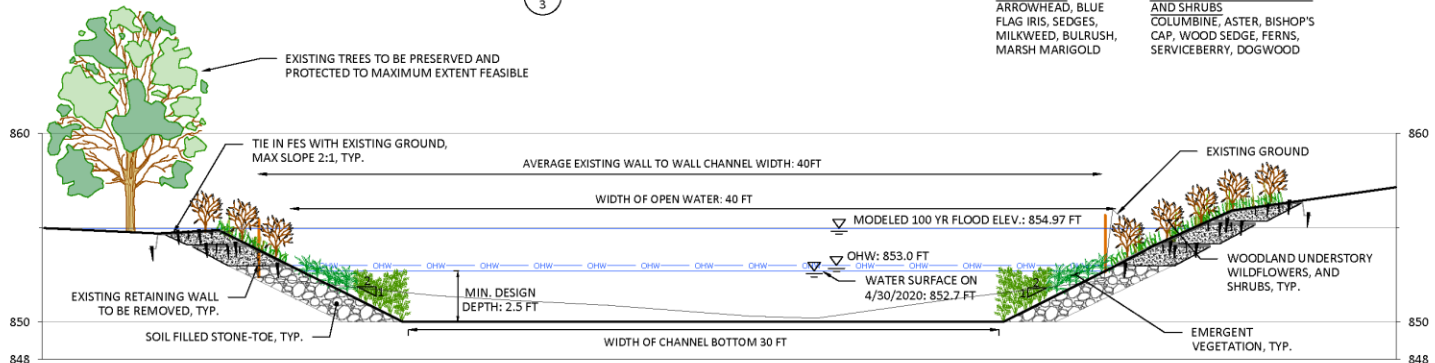


1
3

TYPICAL CROSS SECTION AT NARROWEST SECTION

EXAMPLE EMERGENT VEGETATION
ARROWHEAD, BLUE FLAG IRIS, SEDGES, MILKWEED, BULRUSH, MARSH MARIGOLD

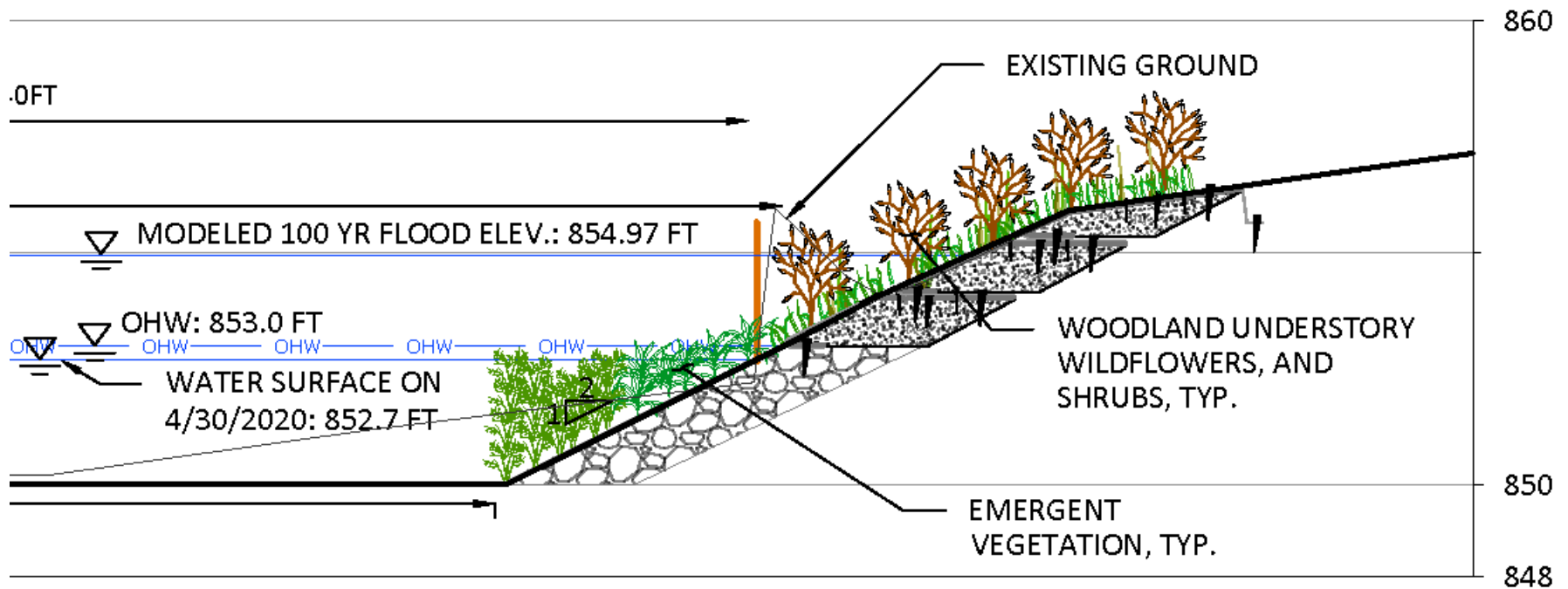
EXAMPLE WOODLAND UNDERSTORY WILDFLOWERS, AND SHRUBS
COLUMBINE, ASTER, BISHOP'S CAP, WOOD SEDGE, FERNS, SERVICEBERRY, DOGWOOD



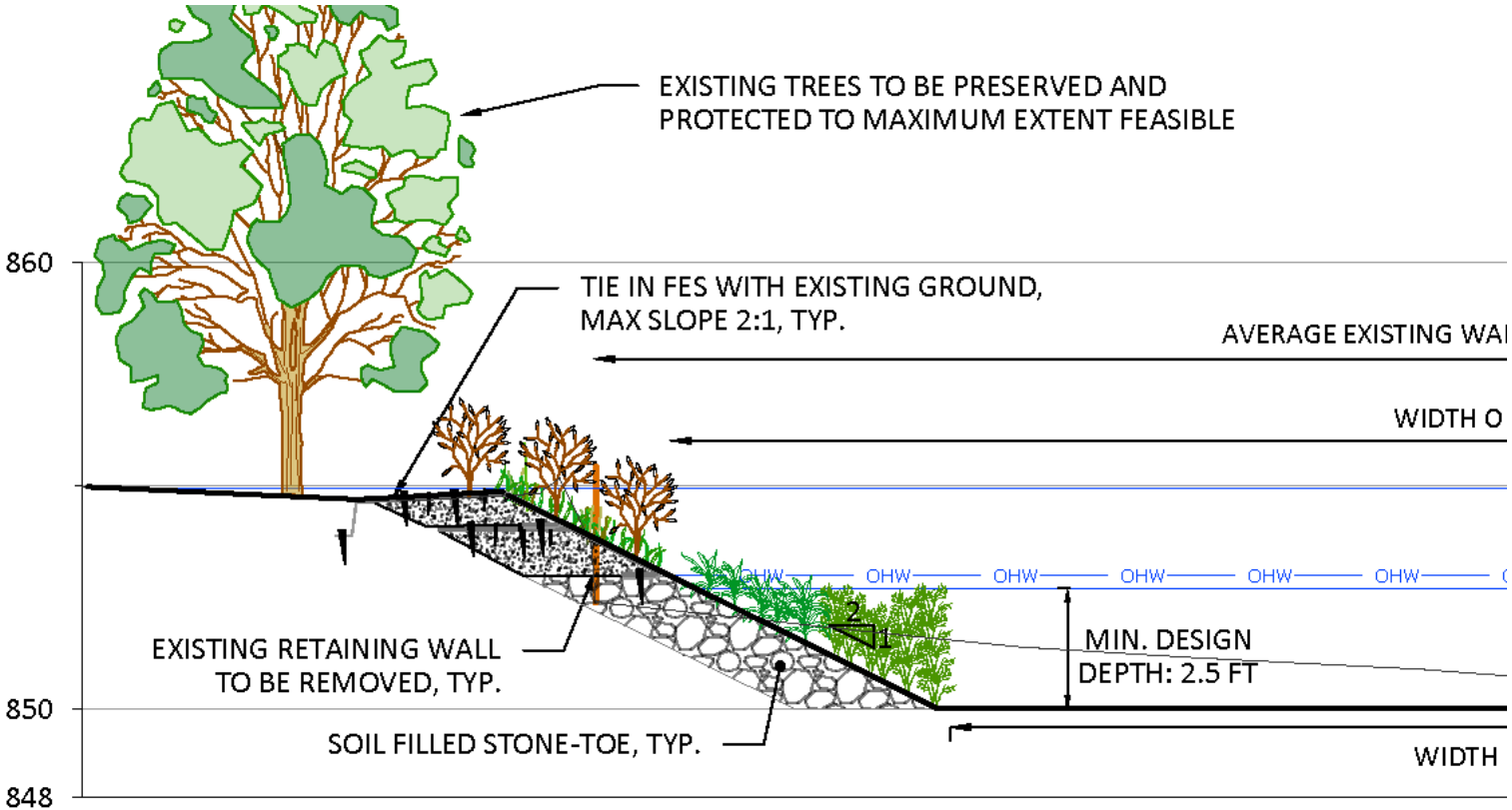
2
3

TYPICAL CROSS SECTION NEAR CEDAR LAKE

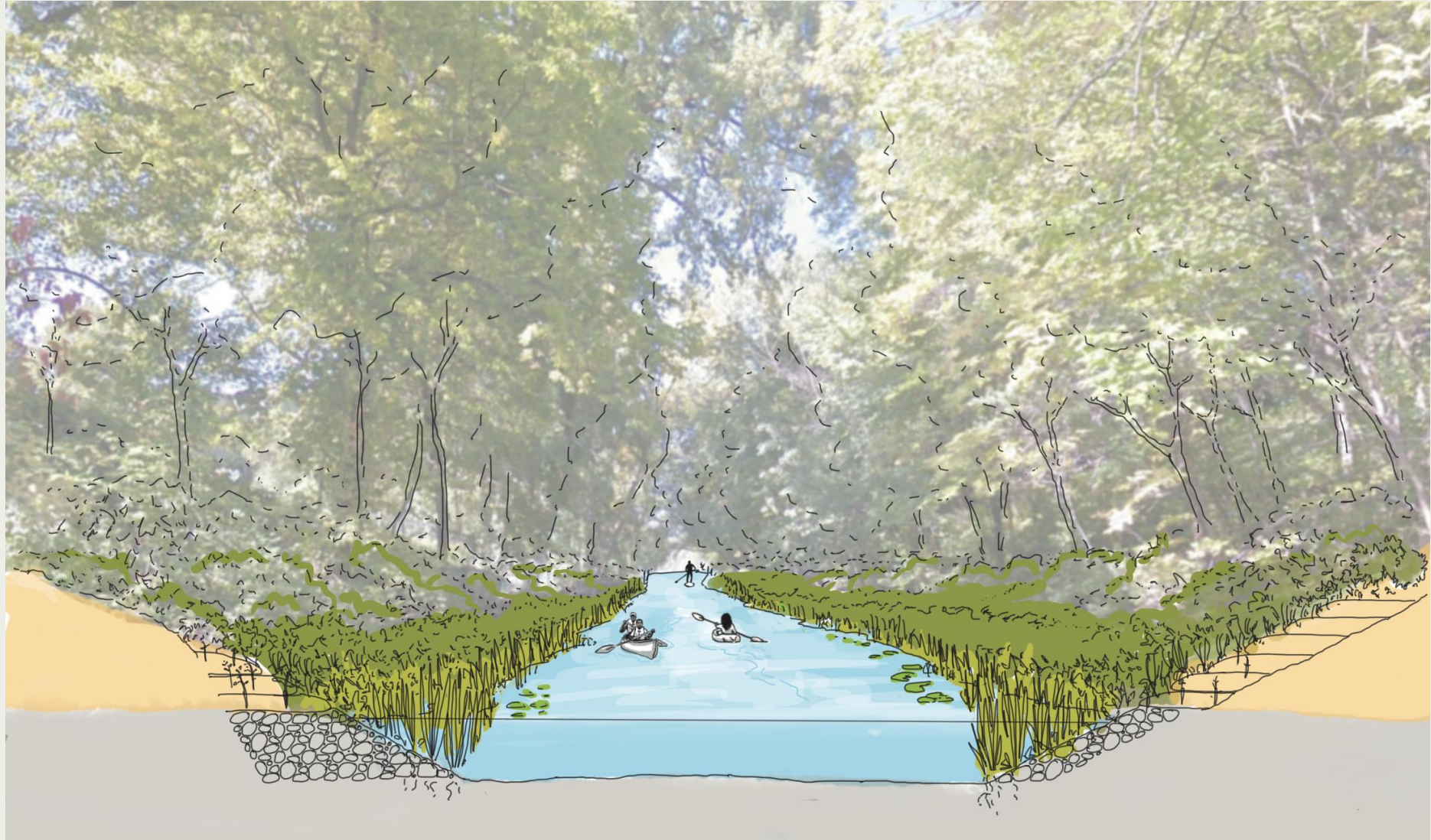
Conceptual Plan – Detail View



Conceptual Plan – Detail View

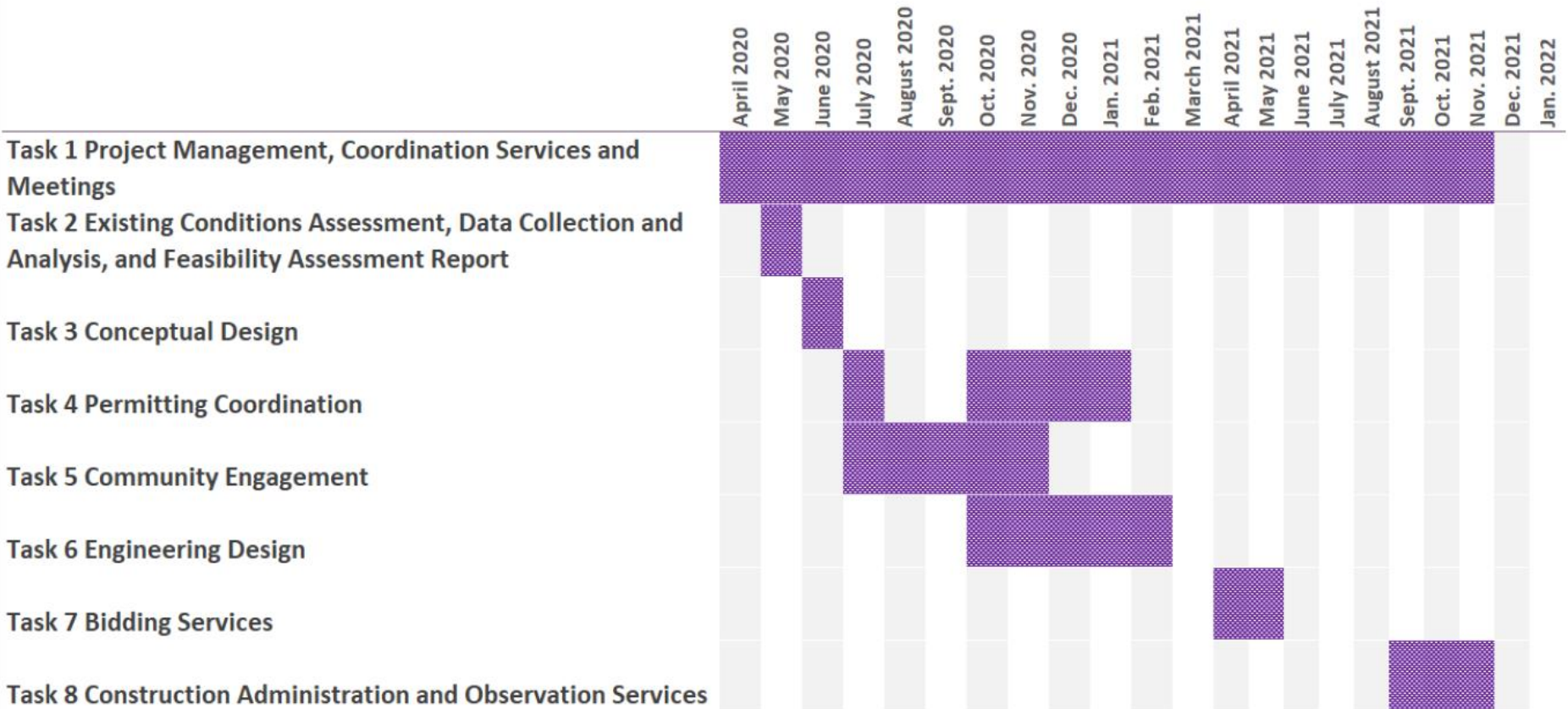


Conceptual Plan



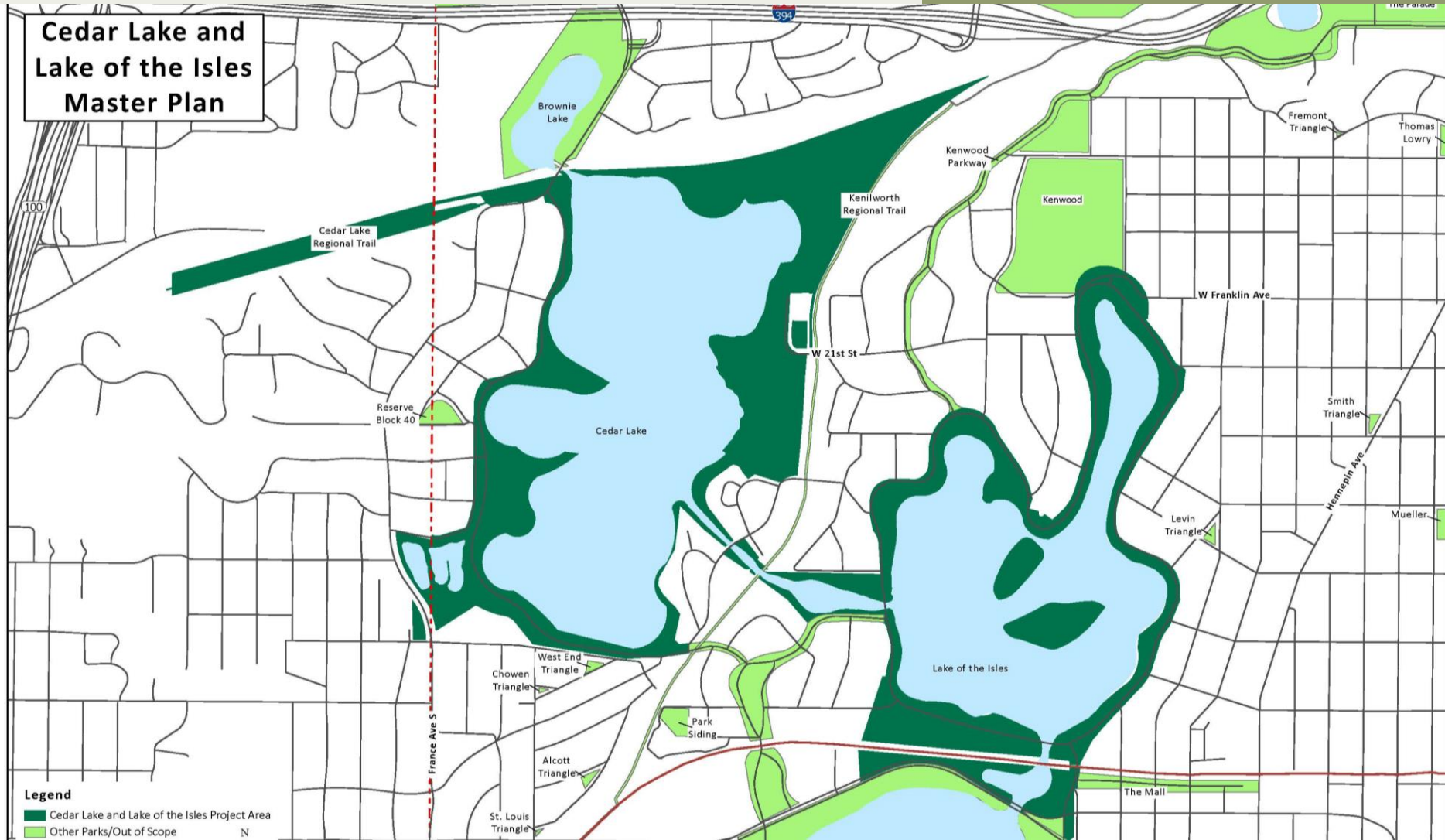
Next Steps and Schedule

Kenilworth Channel Stabilization Anticipated Project Timeline



Master Plan Update

Cedar Lake and Lake of the Isles Master Plan





Emerging Topics

- Water quality
- Access
- Amenities and use
- Visitor projections
- Safety and welcome
- Preservation of natural areas
- Emergency response



Questions

How to ensure racial equity is inherently imbedded into the process?

Whether/how to proceed forward with the master plan work during current circumstances?

cedar lake & lake of the isles

Questions or comments?

Contact Emma Pachuta at

epachuta@minneapolisparcs.org

612-499-3711

Engage with the project at:

www.minneapolisparcs.org/cedar-isles

bit.ly/cedar-isles





Questions and Discussion

Phone questions allowed at this time



Minneapolis
Park & Recreation Board

